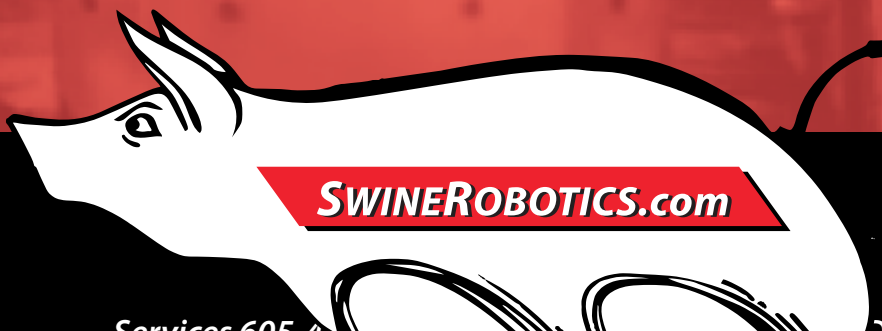


# The Boar Bot

## *Parts Manual*



Services 605-433-5510 • 16038 505th Ave. • Leola, SD 57456 • Sales 877-202-9927

[SwineRobotics.com](http://SwineRobotics.com)

**BB001:** BB Wheel



**BB001A:** BB Wheel Poly



**BB002:** BB Sprocket



**BB003:** BB Bushing, Wheel



**BB004:** BB Axle, 19"



**BB004A:** BB Axle Narrow, 16 5/8"



**BB006:** BB Sprocket Idler



**BB008:** BB Set Screw Axle



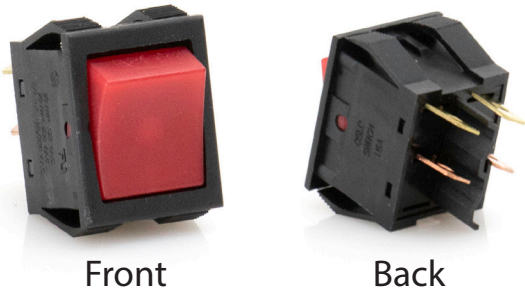
**BB009:** BB Motor Single



**BB009A:** BB Motor  
2 Speed



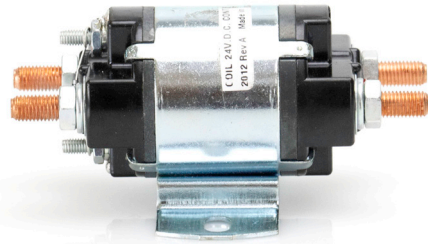
**BB010A:** BB Switch Toggle



Front

Back

**BB011:** BB Solenoid



**BB012:** BB Fuse Holder



**BB013:** BB Electrical Box



**BB013A:** BB Electrical Box 2.0



**BB014:**  
BB Antenna



**BB014A:**  
BB Antenna Cable



**BB014B:**  
BB Antenna 900 MHz



**BB014C:**  
BB Antenna 24 GHz



**BB016A:** BB Battery  
Charger 1.5



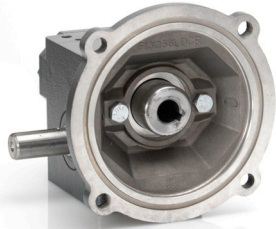
**BB016:** BB Battery  
Charger 24



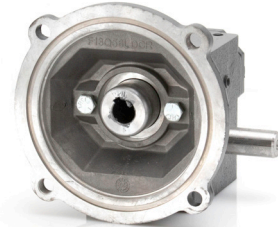
**BB016B:** BB Battery  
Charger 12 Volt



**BB017:** BB Gear Box B



**BB018:** BB Gear Box C



**BB021:** BB Chain Drive



**BB022:** BB Chain Conn Link



**BB023:** BB Chain Offset Link



**BB030A:**  
BB Sprocket  
Gear 2.0



**BB030B:**  
BB Sprocket  
Gear 3/4



**BB030C:**  
BB Sprocket  
Gear 5/8



**BB031:** BB Transmitter RLM

**BB031A:** BB Transmitter PBill  
900 mHz

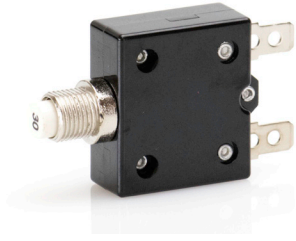
**BB031B:** BB Transmitter PBill  
2.4 GHz



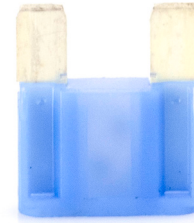
**BB032:** BB Receiver



**BB033:** BB Circuit Breaker



**BB033A 60 Amp:** BB Fuse



**BB035:** BB Battery Bolt



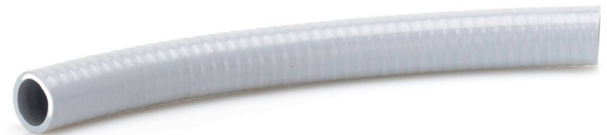
**BB038:** BB Axle Shim



**BB039:** BB Connector Wire Feed



**BB041:** BB Conduit Flex



**BB049:** BB U Bolt



**BB050:** BB Gear Shaft



**BB051:** BB Key



**BB052-47836:** BB Charge Rec



**BB053:** BB Arc Suppressor



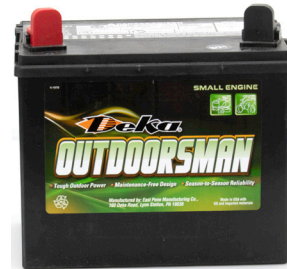
**BB054:** BB Diode



**BB055:** BB Battery M24MF



**BB055B:** BB Battery Small 12



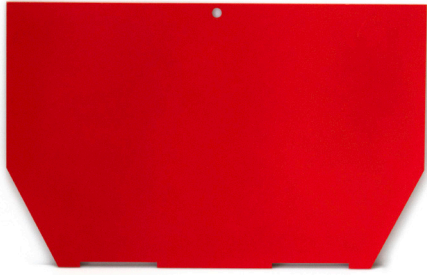
**BB058:** BB Terminal Block



**BB061:** BB Fuse, 3 Amp



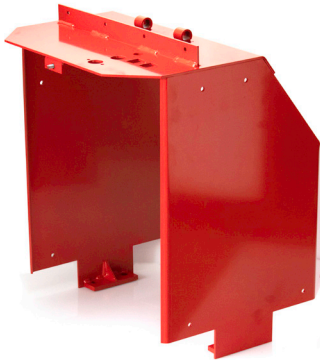
**BB070:** BB Door Small



**BB071A:** BB Nose Guard Bracket



**BB074:** BB Cover



**BB077:** BB Chain Door



**BB078:** BB Door Long



**BB082-47837:** BB Charger Plug



**BB083:** BB D-Ring



**BB084:** BB Harness

**BB084A:** Special 6" Longer Harness

**BB084B:** Special 6" Shorter Harness



**BB085:** BB Harness Rope



**BB088:** BB Brush Spring



**BB089:** BB Brush Clip



**BB092:** BB Fuse Larger



**BB093:** BB Gear Brass



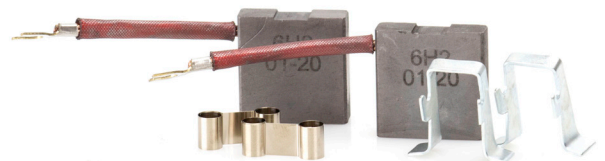
**BB094:** BB Hinge



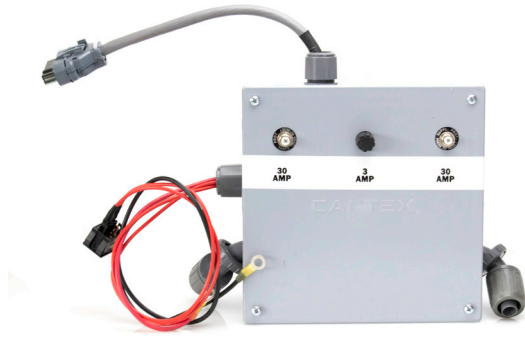
**BB096:** BB Transmitter Case



**BB099:** BB Brush Kit



**BB100:** BB Electrical Box Complete



**BB101:** BB Electrical Box Cover



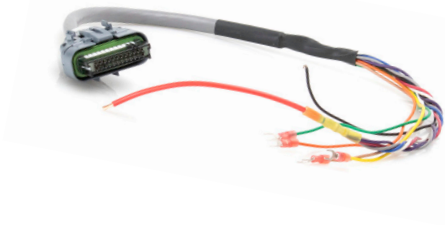
**BB102:** BB Wire



**BB104:** BB Conduit Connector



**BB106:**  
BB Receiver Cable



**BB106A:**  
BB Receiver Cable PBill



**BB107:** BB Harness Snap



**BB109:** BB Wiring Harness 1.0



**BB110:** BB Wire End



**BB112:** BB Transmitter Strap



**BB114:** BB Volt Meter



**BB115:** BB Wire Nut



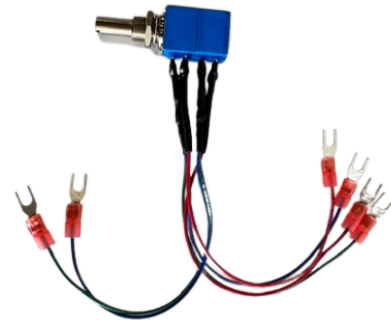
**BB117:** BB Electrical Box Bracket



**BB119:** BB Brush Cover



**BB121:** BB Potentiometer 2.0



**BB122:** Set Screw for Drive Sprocket



**BB201:** BB Wiring Harness 2.0



**BB200:** BB Electrical Box Complete 2.0



**BB202:** BB Variable Sp Board



**BB203:** BB Speed Board Harness/Plug

